

JRC

JLR-7700MKII

12-Channel Parallel for simultaneous reception of 12 satellites.

The DGPS Navigator composed of a DGPS receiver and a LCD display unit ensures very accurate position fixing.

0.0011

JRC

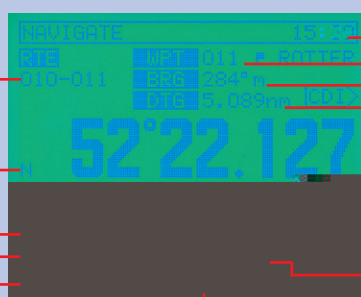
Very accurate DGPS position fixing, large



The DGPS Navigator offers position fixing with high accuracy
Own ship's position, course, speed, planned route, bearing and

DISPLAY EXAMPLES

NAVIGATE

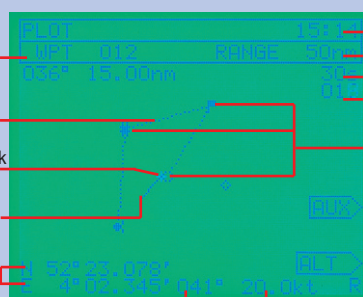


Selected route

Current position (lat/Lon)
Course
Speed

Course deviation value and direction to steer

PLOT



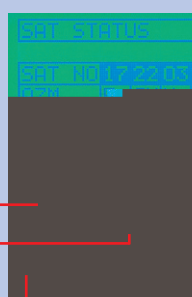
Waypoints No.

Present route (dotted line)
Own ship's mark (+mark flicker)
Ship's track (solid line)

Current position

Course Speed

SAT STATUS



Local time
Display range
Track memory intervals
Number of tracked memory
Waypoint marks

Display select menu

Positioning accuracy (HDOP)
Number of orbiting satellites

Beacon parameters: Frequency, RSSI

Large LCD graphics and simple operation



NNN-4331
DGPS Receiver

DGPS NAVIGATOR JLR-7700MKII

● Large LCD Display

Necessary navigational information can be displayed on a large LCD screen at a glance, ensuring simple operation without troublesome switchover of displays.

● More Accurate DGPS Positioning

Differential GPS position data is automatically received in DGPS service areas, and own ship's position fixes are displayed with very high accuracy.

● Waypoint Memory

Up to 499 waypoints can be stored in the internal memory with their place names in 8 alphanumeric characters.

● Data Outputs

Two data ports are provided: one is an RS-422 port, and the format is selectable from NMEA0180, NMEA0183 (version 1.5 or 2.1) and a JRC.

● Navigational Calculations

Navigational calculations are made in the Great Circle or Rhumb Line mode.

● Loran C/A TD Display

The GPS position fixes can be converted into Loran C or A time difference values and displayed on the LCD screen.

● Relay Contact Output

A log pulse or external buzzer alarm signal is available from the relay contact output.

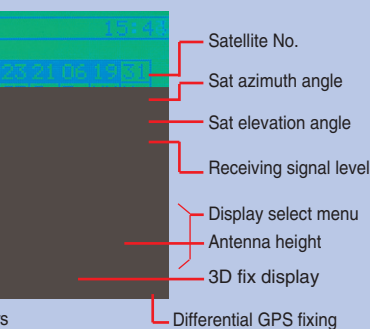
● Weather information display

Local weather and sea conditions in coastal sea areas of Japan can be displayed.

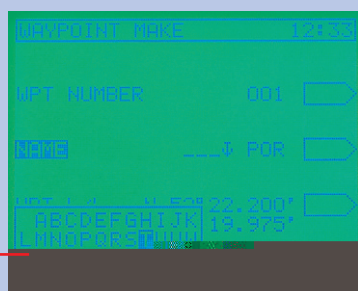
Actual size

anywhere in the world.

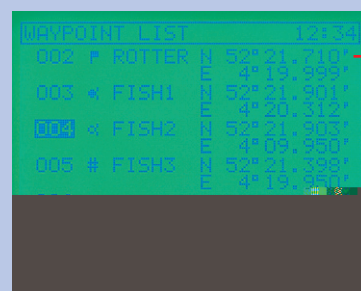
and distance are displayed on the large LCD screen.



WAYPOINT MAKE



WAYPOINT LIST



SPECIFICATIONS

Position Accuracy

GPS position fix: 15 m 2D RMS (HDOP \leq 4)
 DGPS position fix: 5 m 2D RMS (HDOP \leq 4)

Beacon Receiving

Receiving frequency: 283.5kHz to 325kHz
 Frequency step: 500Hz
 Beacon station selection: Automatic or manual setting
 of a frequency and baud rate.
 Demodulation: Minimum shift keying (MSK)
 RF bit rate: 50/100/200 bps

General Functions

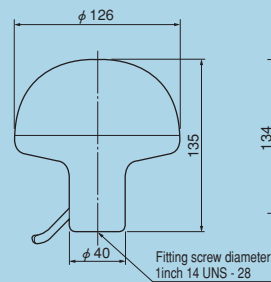
Display type: 5-inch STN LCD, 160 \times 128 dots
 Back-lighting: EL (LCD), lamps (keyboard)
 Waypoint memory: Up to 499 waypoints including 100 event marks (WPT No. 400 to 499), each point with a place name in 8 alphanumeric characters
 Route plan: One route with up to 499 waypoints
 Alarms: Waypoint arrival, cross track error, anchor watch, boundary and no-fix
 Position correction: Selectable from 46 geodetic datum, and manual lat./lon. entry
 Display language: English or Japanese
 Operating temperature: DGPS Receiver: -25 to +55 $^{\circ}$ C
 Display Unit: -15 to +55 $^{\circ}$ C
 Power requirements: 12/24 VDC, 10W or less
 100/220 VAC with AC power supply unit (option)

COMPONENTS(Standard)

Component	Model	Q'ty
Display unit	NWZ-4570B	1
DGPS Receiver	NNN-4331	1
DC Power cable	CFQ-3598B	1
Screw mount	MTV302007	1
Fitting belt	MPBP02520	1set
DGPS connection cable	CFQ-8919	1
Junction box	NQE-7700	2
Pole mounting kit	MPBP30608	1kit
Instruction parts	Copper tape, Connector	1set
Spare parts	2A Fuses	3
Instruction manual		1copy
Extension cable	250V-MPYCYS-5	Option

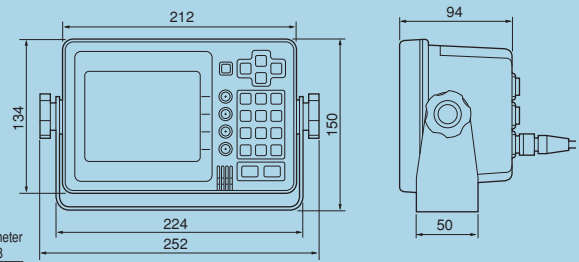
DIMENSION

DGPS Receiver (NNN-4331)



Mass: Approx. 1.7 kg

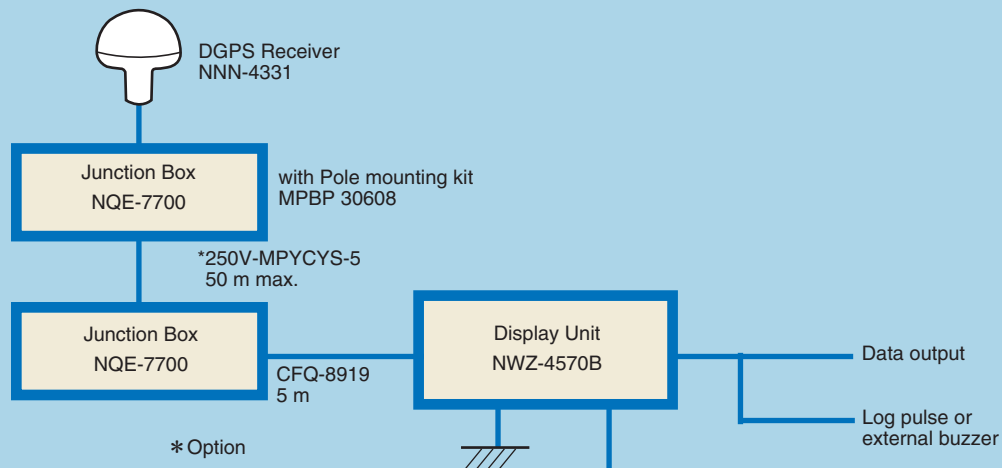
Display Unit (NWZ-4570B)



Mass: Approx. 1.8 kg

Unit:mm

SCHEMATIC DIAGRAM



• Specifications may be subject to change without notice.

For further information, contact:



Since 1915

Japan Radio Co., Ltd.

URL <http://www.jrc.co.jp/eng/>

Main Office: Nittochi Nishi-Shinjuku bldg.
 10-1, Nishi-Shinjuku 6-chome
 Shinjuku-ku, Tokyo 160-8328, Japan
 Telephone: +81-3-3348-4099
 Facsimile: +81-3-3348-4139

Overseas Branches : Seattle, Amsterdam, Athens
Liaison Offices : Taipei, Manila, Jakarta, Singapore,
 Hanoi, Shanghai, Hamburg, New York